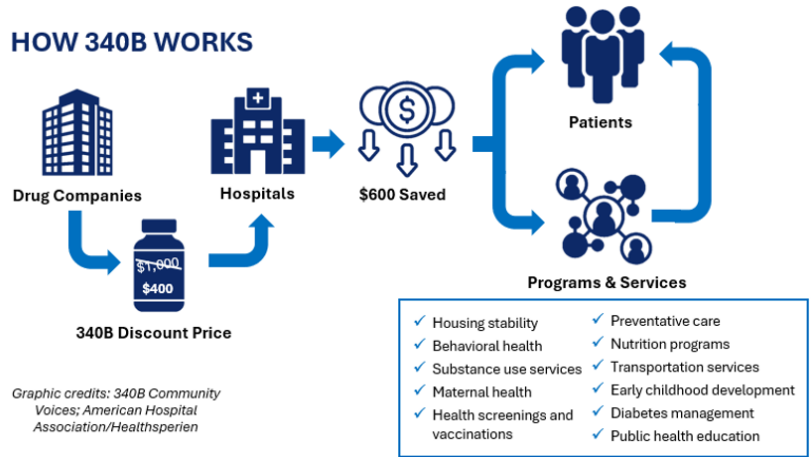


340B Community Benefits Program in Nebraska

What is the 340B Community Benefits Program?

The 340B Community Benefits Program allows covered safety net hospitals and other community care organizations to access certain outpatient prescription drugs at discounted prices. The program has been an integral part of the fabric of health care since its inception by Congress in 1992 and does not require any state or federal taxpayer dollars.

HOW 340B WORKS



How Does it Support Health Care Needs?

Nebraska hospitals have been able to drive savings from the program into their communities for more than 30 years, supporting access to care for the most vulnerable patients. One of the greatest strengths of the 340B program is the flexibility it provides hospitals to invest savings back into local health care needs.

340B Participation Helps to Provide Services in Rural Nebraska Such As:

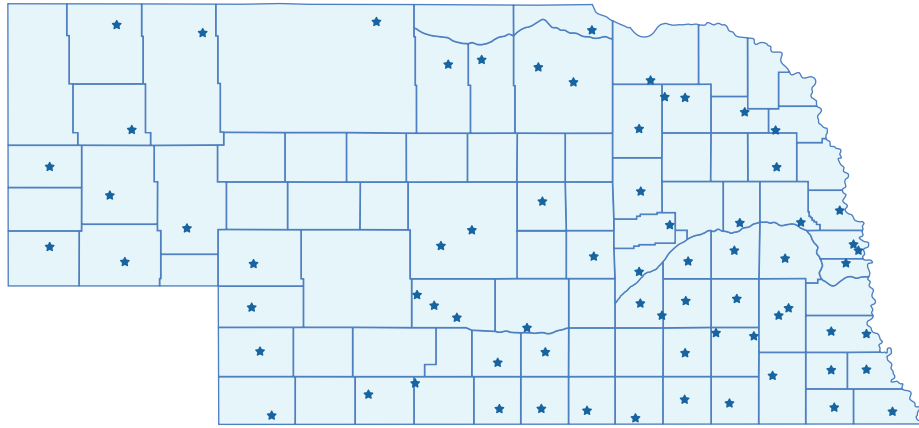
- **AMBULANCE SERVICES**
- **FREE MONTHLY BLOOD PRESSURE CHECKS**
- **COMPREHENSIVE AMBULATORY & INPATIENT SERVICES**
- **MEDICATIONS FOR VULNERABLE PATIENTS**
- **RETAIL PHARMACY SERVICES (VACCINE EXPANSION, PRESCRIPTION DELIVERY, MEDICAL EQUIPMENT)**
- **HOME HEALTH**
- **24/7 EMERGENCY CARE**
- **MATERNAL HEALTH**
- **SPECIALTY SERVICES (CARDIOLOGY, BEHAVIORAL HEALTH, OBSTETRICS/GYNECOLOGY, ETC.)**
- **HOSPICE & PALLIATIVE CARE**
- **ONCOLOGY CARE**
- **COMMUNITY HEALTH EDUCATION & OUTREACH**
- **COMMUNITY WELLNESS & FITNESS CENTERS**
- **MEDICATION ASSISTANCE & DISCHARGE MEDICATIONS**
- **HEALTH FAIRS, SUPPORT GROUPS, JOB SHADOWING, & BLOOD DRIVES**

Restricting 340B is a Threat to Hospital Care.

The 340B program is critical to hospitals throughout Nebraska, helping them navigate out of control drug costs and retain low-cost access to care. The program is more important than ever as drug prices are the most rapidly growing expense for hospitals. Restrictions imposed by drug companies on 340B discounts for contract pharmacies are exacerbating the financial strain on Nebraska's 340B hospitals, particularly rural ones, as they struggle to maintain affordable access to medications for their patients. Discriminatory practices and burdensome administrative hurdles result in dollars being taken from rural 340B entities and the communities they serve to further pad the enormous profit margins of out-of-state drug manufacturers.

Without 340B savings, rural hospitals and clinics have to scale back or eliminate these and other services.

Nebraska 340B Community Benefits Program Hospitals



| | | | |
|----------------------------|----------------------------------|---|---|
| 62 | 67 | 58 | 94% |
| Number of CAHs in Nebraska | Total 340B hospitals in Nebraska | CAHs in Nebraska that participate in 340B | CAHs in Nebraska that participate in 340B |

Annie Jeffrey Memorial County Health CenterOsceola
 Antelope Memorial Hospital.....Neligh
 Avera Creighton Hospital..... Creighton
 Avera St. Anthony’s Hospital..... O’Neill
 Beatrice Community Hospital & Health Center..... Beatrice
 Boone County Health Center..... Albion
 Box Butte General Hospital..... Alliance
 Boys Town National Research Hospital..... Omaha
 Brodstone Healthcare..... Superior
 Brown County Hospital..... Ainsworth
 Bryan Medical CentersLincoln
 Butler County Health Care Center.....David City
 Callaway District Hospital Callaway
 Chadron Community Hospital & Health Services.....Chadron
 Chase County Community Hospital & Clinics.....Imperial
 Cherry County Hospital Valentine
 CHI Health Creighton (CUMC - Bergan Mercy)..... Omaha
 CHI Health Immanuel..... Omaha
 CHI Health Plainview..... Plainview
 CHI Health SchuylerSchuyler
 CHI Health St. ElizabethLincoln
 CHI Health St. Mary’s..... Nebraska City
 Children’s Nebraska Omaha
 Community Hospital McCook
 Community Medical Center..... Falls City
 Cozad Community Hospital..... Cozad
 Crete Area Medical Center.....Crete
 Dundy County Hospital.....Benkelman
 Faith Regional Health Services..... Norfolk
 Fillmore County Hospital..... Geneva
 Franciscan Healthcare West Point
 Genoa Community HospitalGenoa
 Gordon Memorial Hospital..... Gordon
 Gothenburg Health Gothenburg

Harlan County Health System.....Alma
 Henderson Health Care Services Henderson
 Howard County Medical Center..... St. Paul
 Jefferson Community Health & Life.....Fairbury
 Johnson County Hospital..... Tecumseh
 Kearney County Health Services Minden
 Kimball Health Services Clinic Kimball
 Lexington Regional Health Center.....Lexington
 Memorial Community Health..... Aurora
 Memorial Community Hospital & Health System.....Blair
 Memorial Health Care Systems.....Seward
 Merrick Medical Center Central City
 Morrill County Community HospitalBridgeport
 Nebraska Medicine Omaha
 Nemaha County Hospital..... Auburn
 Ogallala Community HospitalOgallala
 Osmond General Hospital Osmond
 Pawnee County Memorial Hospital.....Pawnee City
 Pender Community HospitalPender
 Perkins County Health Services.....Grant
 Phelps Memorial Health Center Holdrege
 Providence Medical Center Wayne
 Regional West Medical Center Scottsbluff
 Rock County Hospital..... Bassett
 Saunders Medical Center Wahoo
 Sidney Regional Medical Center..... Sidney
 Syracuse Area HealthSyracuse
 Thayer County Health Services.....Hebron
 Tri Valley Health System..... Cambridge
 Valley County Health System Hospital..... Ord
 Webster County Community Hospital..... Red Cloud
 West Holt Medical Clinic.....Atkinson
 York General Hospital York